



SHIHTZU EXCHANGE

EVERY SHIBAINU NEED SHIHTZU



Welcome to Shihtzu Universe

A NFT MINTING & METAVVERSE UNIVERSE

*The **Shihtzu Universe** is combining the power of memes with real utility, NFT Minting, and metaverse universe. Shihtzu is also providing a power and opportunity to the people -- to the underdogs -- instead of venture capitalists and hedge funds. Shihtzu is also one of the most recognized brands in the world. Our team is dedicated to honoring the legacy of the brand and building upon its success, so that **Shihtzu** continues to be associated with gaming metaverse for years to grow its future to the next level.*

***Shihtzu core** businesses include video games, licensing, and blockchain. The team at Shihtzu is focused on creating value by expanding and integrating each of these businesses under the leadership of our Core Community.*



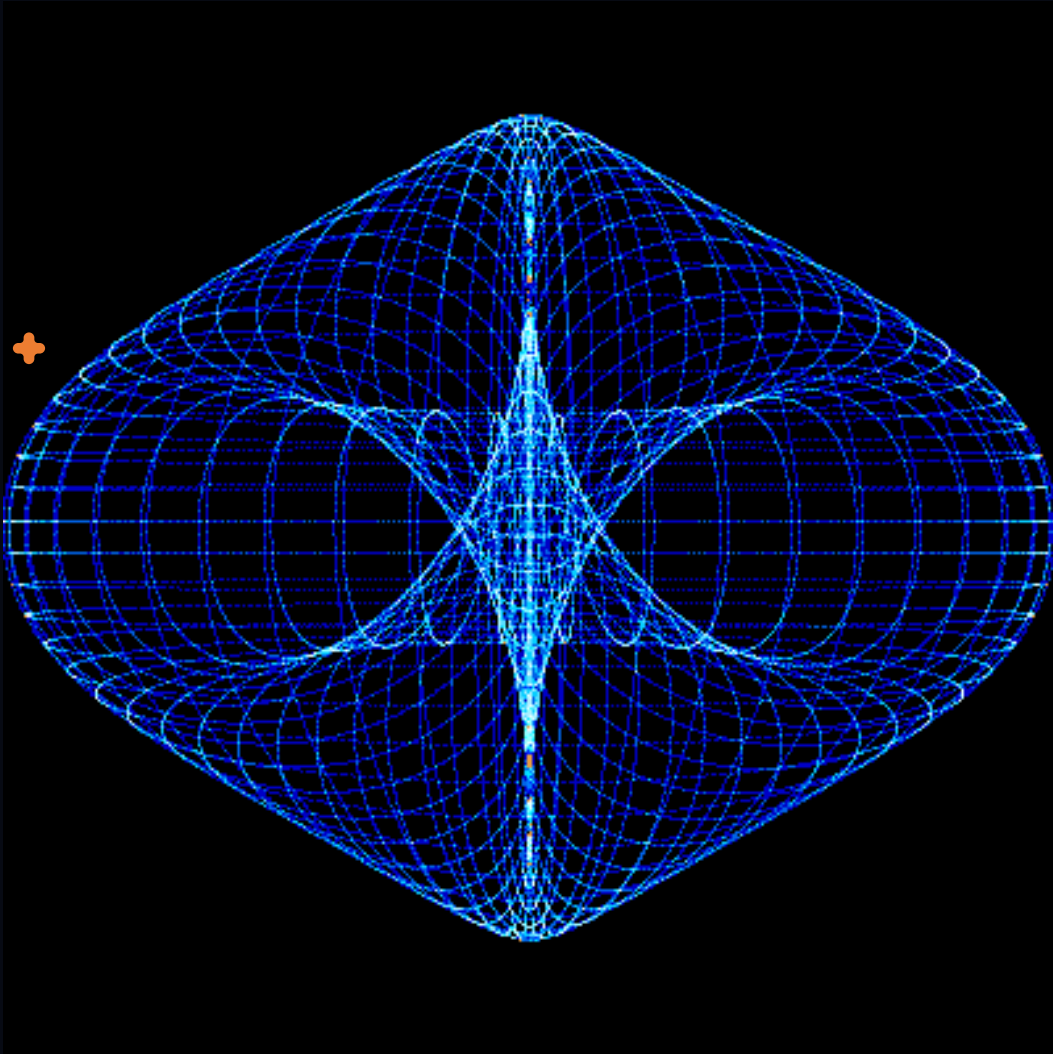
Shihtzu Exchange is another Meme coin universe, The Shihtzu universe will create a new edge of NFT minting & the metaverse platform for worldwide meme coin industry lovers.

Shihtzu Exchange is not only a simple meme token it is a advance meme coin based blockchain ecosystem which migrate the Shihtzu NFT Minting & Metaverse protocol. The Shihtzu Exchange universe is also determined to pursue the next generation NFT marketplace based on animal lovers, artists of animals, including supporting animal lovers in their future roadmap.

If you've seen the craziness around Shiba, that went completely crazy. But the Shihtzu Exchange token has a great future for the whole meme coin lovers. The Shihtzu Exchange is also starting to make collaboration between the two parties on NFT groundwork will create powerful impact on changing animal lives and those of animal lovers creating a better and green side.



What Makes Us Different



The Shihtzu Exchange is substantial millions of self-funding from its worldwide strong community. This helped kickstart the Shihtzu Exchange project and also financed and engineered the third-gen metaverse gaming platform.

We also have experience taking multiple startups from self-funding and seed funding to ranking second on the Financial Times 1000 fastest-growing companies list. We are building the fastest-growing NFT Minting & Metaverse gaming platform, with a revenue increase of over 3,000% in the next few years. Our founder and our CEO recently applied his tech and business acumen to the crypto space with a successful release of Tenset.

Shihtzu Exchange's extensive marketing experience and ownership of the gaming advertising platform will enable the Shihtzu Exchange message to reach billions of people in the next few months.



Who We Are

*The Shihtzu Exchange is 100% run by the community, with the term of **Decentralized finance**. Shihtzu Exchange is just starting a revolution in the meme coin industry with the help of NFT minting and Metaverse platform, Shihtzu Exchange coin will be use case currency and It is a New edge of First NFT minting and metaverse platform for meme coin industry. It represents all the blockchain processes and decentralized finance protocols that power the internet and the emerging Web3 into a central and interoperable space. In this future realm, communications, finances, game worlds, and personal profiles. We built the Shihtzu NFT Minting & Metaverse platform with a single mission in MIND - To Bring NFTs & the Metaverse to the masses whilst rewarding HOLDERS with passive income in **\$STZU** coin.*



Shiba Inu & Shihtzu History

Every Shiba Inu Needs Shihtzu

Shiba Inu & Shihtzu are both the trendy breeds of dogs.

They look distinctly different from one another, and they have temperament differences as well. The Shih Tzu is a breed from China, while the Shiba Inu originated from Japan. The name translates to "a small lion." They both have similar features despite their origins being so different.

The Facts Says Shih Tzu is a breed of dog from China that's believed to have been bred by crossing Shiba Inu. These tiny little creatures are often referred to as "the lion-dog", because they resemble miniature lions!

We know that Shiba Inu's were originally bred in Japan. And at the same time, Shih Tzus originated in China before arriving in their current home country. The name for this breed translates into "small lion." They're much smaller than most other breeds. But they are the most popular expenses.





Our Vision

Shihtzu Exchange Token is a decentralized cryptocurrency that was created to become the token of reference for interactive entertainment for the meme industry. Our goal is to have the Shihtzu exchange token used as widely as possible across the interactive entertainment meme industry, allowing the Shihtzu community new options for the exploitation of their future growth and integration of in-game assets.

The Shihtzu Exchange is committed to expanding our NFT business through a combination of collectibles and NFTs with a wide variety of utility. We anticipate a sustained role for NFTs in gaming and entertainment, and our goal is to make NFTs approachable, accessible, and fun for a wide range of players and collectors.





Why Shihtzu Exchange is Future?

Highly Programmable Ecosystem

The Shihtzu Exchange creates an interoperable environment for the flow of NFTs to various public chains, marketplaces, and metaverse service providers through a cross-chain bridge. This means that they can be exchanged and traded across different frameworks with ease.

Sustainable Future For NFTs

Our platform can help you to Mint, deploy, and sell NFTs without leaving a carbon footprint. It is also an efficient and ecological solution, because its algorithm addresses the environmental concerns tied to NFTs, minting and metaverse. It is leading to 99.99% greater energy efficiency.

Smart Contract Security

Since each transaction is stored on a distributed ledger, tampering with a recorded history or minting new tokens from thin air to manipulate value is impossible.



Shihtzu Powering Meme Industry With Metaverse

Shihtzu is a Metaverse Ecosystem for New Land Opportunities.

The **Shihtzu metaverse** platform refers to a virtual space that is shared by different worlds, and created by the combination of augmented reality, virtually-enhanced physical reality, within the Member industry. The Shihtzu community also aims to combine the **Shihtzu NFTs** into a brand-new gaming platform called the Shihtzu Metaverse very soon and powering the Meme industry to the next level first time.

The **Shihtzu Metaverse platform** will also combine the best aspects of the company's legacy gaming properties and "the most current NFT creators in gaming, dog shelter using Digital Collectibles and Shihtzu NFTs as a core component of the entire Metaverse experience".



What is Metaverse

A Metaverse is a digital environment operating on blockchain. Here, technologies such as VR and AR act as visual component providers, while the decentralized medium provides unlimited social interaction and business opportunities. These environments are scalable, interoperable, versatile, and marry innovative technologies and models of interaction among its participants on both the individual and enterprise levels. The Metaverses are digital 3D universes that incorporate numerous processes and elements such as communications, finances, game worlds, personal profiles, NFTs, and more.

The potential of the metaverse is attributed to the freedom it offers; anyone in the metaverse can create, buy, and view NFTs to collect virtual estate, join social communities, create virtual identities, game, and more. This array of use cases opens numerous opportunities for monetization of real-world and digital assets, where both businesses and users can incorporate into the metaverse frameworks.

Future metaverse will unify separate online worlds, with NFTs facilitating cross-chain activities.



How Shihtzu NFT Impact Metaverse

Shihtzu Exchange Token a Open & Fair Economy

The Shihtzu exchange NFTs can disrupt the traditional social network paradigm of user interaction, socialization, and transaction in the metaverse. Even Shihtzu NFTs can also disrupt the digital meme coin & NFT, minting the future world within the Shihtzu exchange ecosystem. As per the Shihtzu exchange development team, believe that Shihtzu NFTs will access the metaverse. Because it is programmable money built into the smart contracts. Shihtzu Exchange NFT platforms could create opportunities for its community in the worldwide digital space. During the event, the climate controversy around other NFTs within the different ways in which this new form of ownership can be sustainable for its Shihtzu Exchange community.



Future of Shihtzu Metaverse!

The Shihtzu Exchange still in the early stages of development, of metaverse platform and numerous potential social and financial opportunities with the use of Shihtzu NFTs minting platform offer new ways for its community to play, interact, gather, earn and transact.

By incorporating VR, video games, social media and elements of crypto, the Shihtzu metaverse and NFT mining blockchain gaming will become an integral part of Web 3.0, an era where real-world businesses expand into the digital space, and users uncover the versatility of such environments.

We believe that Shihtzu NFT minting platform ownership is a key, and it will open up a world of opportunities in the emerging metaverse industry in the near future. Even for Shihtzu users who are interested, they can use the Shihtzu NFT Marketplace to discover, collect, and trade unique Shihtzu NFT assets and traverse the metaverse.



NOXXON LEADER

NFT
Non-Fungible Token

Future of Shihtzu Exchange NFT Minting

As per the current market, the excitement of artwork-collectables being sold for several million dollars each is difficult to deny, but the value of the concept of non-fungible tokens and its potential for finance goes far beyond simple content-sales. Many crypto experts have predicted NFT minting to be the future of ownership of properties and other assets. According to NFT enthusiasts, all types of properties will see their ownership status tokenized digitally.

- ❖ Shihtzu Exchange NFTs provides the ability to securely purchase, value, and exchange digital art using a digital ledger.
- ❖ Newer platforms also keep getting launched. Binance NFT marketplace and Featured by Binance are some of the latest marketplaces where people can buy and sell NFTs.
- ❖ Shihtzu Exchange Marketplaces also regularly have NFT drops that account for bumps in attention. An NFT drop refers to when a new art collection gets listed on a marketplace.
- ❖ NFTs are more entertaining than cryptocurrencies. They represent a cooler way for the layman, looking to get into the world of cryptocurrencies.



Shihtzu NFT Minting Platform & Advantages

The Shihtzu Exchange created to encourage the buying and selling of NFTs is referred to its Shihtzu NFT Minting Platform. Users looking solely to trade in NFT can do so even without comprehensive knowledge about Bitcoin technology and the coding of smart contracts.

Advantages of NFT minting platform

- ❖ You can mint an unlimited number of NFTs within the Shihtzu platform.
- ❖ Shihtzu exchange NFTs are a stable revenue generator.
- ❖ Shihtzu exchange NFTs are a stable and revenue generator.
- ❖ It is a sustainable way for your business to gain traction among the crypto crowd.
- ❖ It has a better market and community visibility among the crypto world.



Shihtzu Exchange Future Roadmap

*A Shihtzu Exchange universe continues to develop our future building platform along with **\$STZU token** use cases in accordance with applicable regulations. We are working on an innovative platform in which you can earn profit and win the prize.*



SHIHTZU
MEME COIN



**Launch
\$STZU
Meme
Token**



**Launch
Shihtzu
Secure
Dapp Wallet**



**Launch
Shihtzu
Swap
Exchange**



**Launch
Shihtzu NFT
Minting
Marketplace**



**Launch
Shihtzu
Centralized
Exchange**



**Shihtzu
Metaverse
Gaming
Platform**

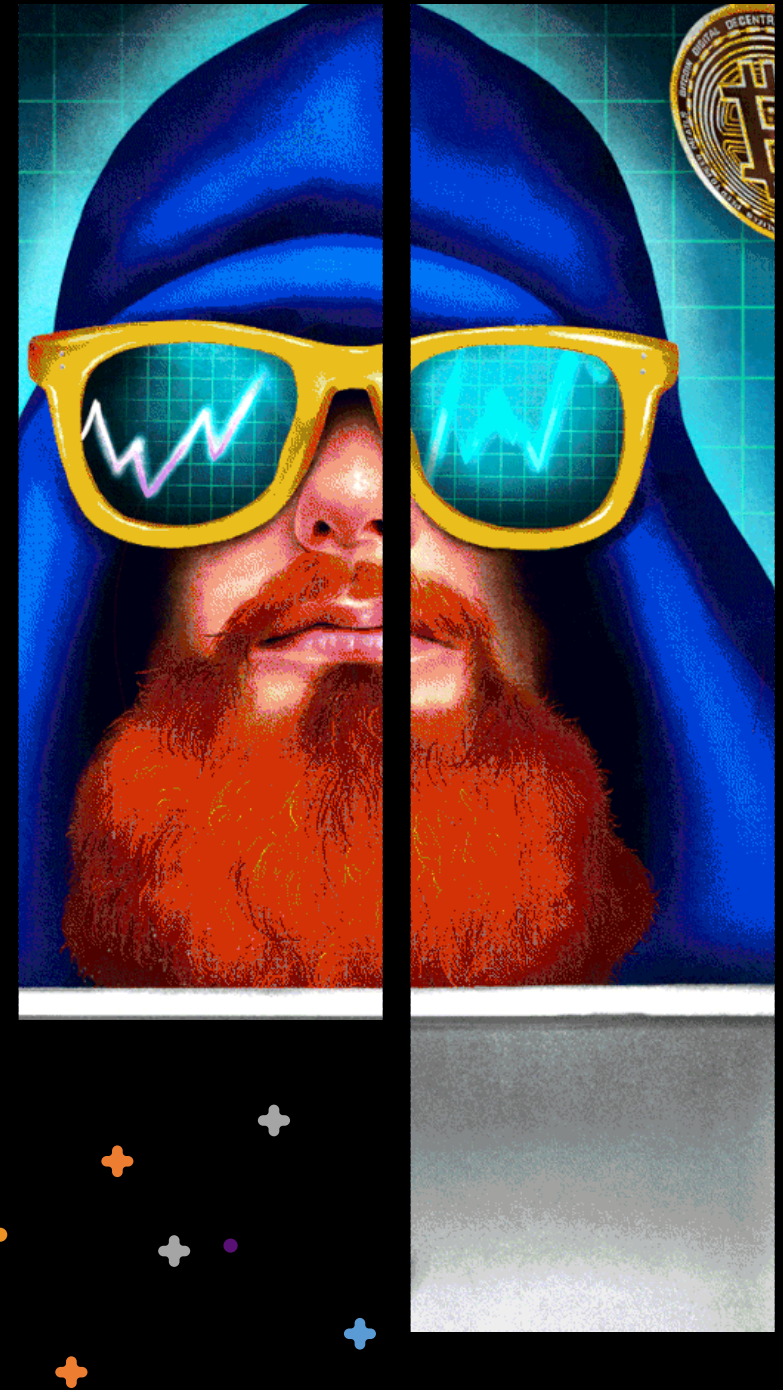


Shihtzu Exchange Meme Coin

The Shihtzu Exchange Universe is launching its first roadmap, which is a meme-based cryptocurrency.

\$STZU memes coins were born on the internet and have journeyed from the fringes to the mainstream today. They're used to drive adoption of cryptocurrency with the new age of revolution NFT Minting & Metaverse gaming platform use case. Such a future-making platform will live in the market, and **\$STZU** coins boost the value of its token rapidly. Shihtzu exchange is also working on its own blockchain, and this **\$STZU** coin will be the free currency of Shihtzu blockchain. So, Shih Tzu meme coin will be the market player in the next few months.

The Shihtzu Exchange coin of \$STZU can be expected to be wild in the near future, and this is a legitimate platform where investors can make money instantly.





Shihtzu Token metrics

The Shihtzu Exchange coin is a decentralized finance community Meme Universe. This will be reached at the top of the meme tokens Market Cap. As big investors join the Shihtzu community on the same flow following the trend within a span of 2-3 days has crossed a community of 20k people and as per the Plan total holders will be in next few weeks will be 300K+.

Shihtzu token Ticker = STZU

Total Supply = 589,736,681,635,752

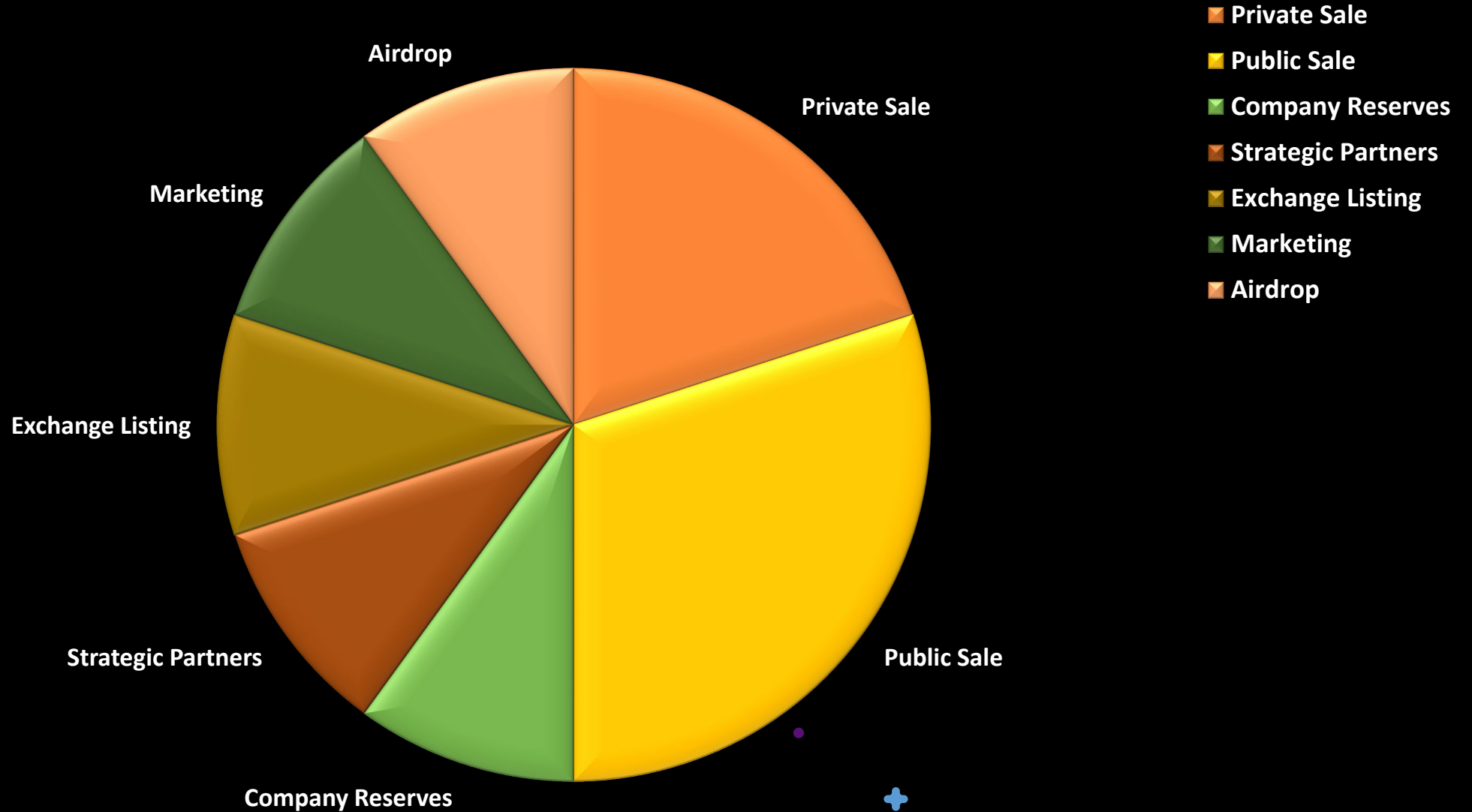
Decimal = 8

Blockchain = (BEP20)





\$STZU Token Distribution





Shihtzu Dapp Wallet

The Shihtzu exchange development community is working on its amazing platform, which is a production-ready and easy-to-customize multi-chain blockchain wallet for your business. Shih Tzu will also support 70+ Popular public chains with a low transaction fee. It also leverages blockchain and tokenization faster and launches your MVP in 1/5 of the time and cost compared to alternative solutions so far. Shih Tzu will become the most popular Gateway in the World of Blockchain because of its own amazing blockchain network.

The Shihtzu Exchange growth strategy will focus on both sides of capital and assets. On the capital side of Shihtzu, it is a “smart chain wallet” that will provide a lower barrier for new users to entry and open digital assets to world mainstream users. Meanwhile, Shih Tzu will also benefit from the advantage of multi-chain support that Shih Tzu will build. By launching Shih Tzu wallet, the assets from more than 50 public chains supported by **Shihtzu exchange wallet** and its blockchain will relate to the Shihtzu blockchain Ecosystem.



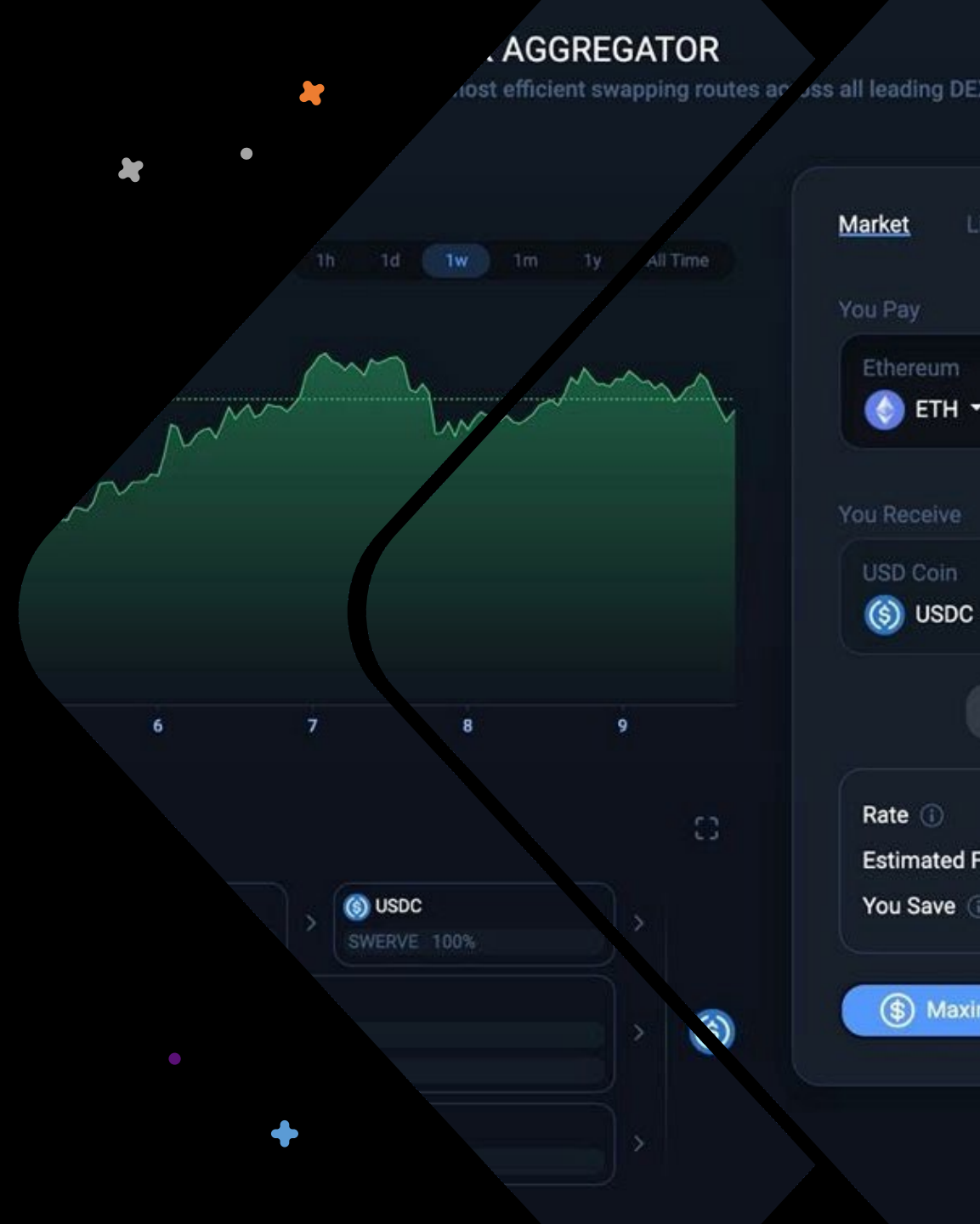


Shihtzu Swap Exchange

AMM has come along the primary ways to trade assets within the Blockchain and cryptocurrency space, especially in the DeFi ecosystem. However, while these tools are handy in trading, it has been challenging to find the right platform that truly delivers on what they promise. Therefore, the Shihtzu Exchange team created the Shihtzu Swap Exchange, an advanced AMM with a deflationary token model.

The Shihtzu Swap Exchange can be defined as a one-stop marketplace that allows users to trade and provide liquidity for their project. The platform also allows users to buy and sell NFT, raise funds for their projects through Initial DEX offering (IDO) or Initial Farming Offering (IFO) models. Moreover, the decentralized marketplace is a neutral network coefficient that has advanced DeFi tools and products.

The Shihtzu platform has a user-friendly interface allowing first-time traders and experts to navigate the platform with ease. It also offers efficient and secure crypto solutions and utilizes blockchain technology.



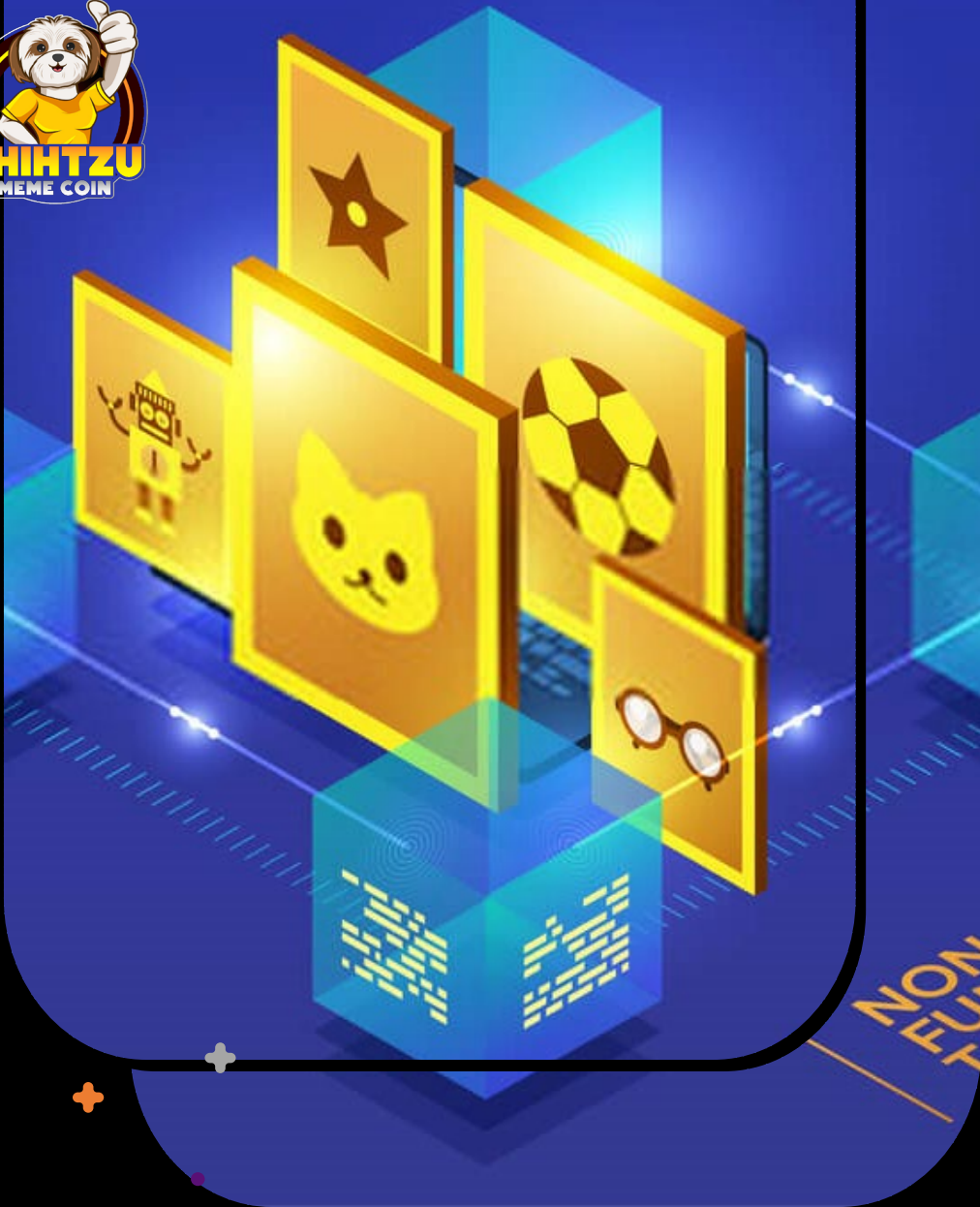


Shihtzu Blockchain

The Shihtzu Exchange development community is also creating own blockchain networks with its native token \$STZU coin, which means every Shiba Inu have a 1 Shihtzu.

As per the core development community of Shihtzu blockchain, the architecture of Shihtzu exchange is a subnetwork (subnet) called the Primary Network. A subnet is a group of transaction validated nodes that coordinate to reach consensus on the state of a set of block chains. Shihtzu Primary Network secures three built-in block chains: the Exchange Chain (X-Chain), Platform Chain (P-Chain), and Contract Chain (C-Chain).

- ❖ **The X-Chain is a platform for creating and trading crypto assets including Shihtzu.**
- ❖ **The STZU-Chain coordinates transaction validates, tracks active subnets, and enables the creation of new subnets and custom blockchains, including private block chains.**
- ❖ **The C-Chain facilitates the creation of smart contracts.**



Shihtzu NFT Minting Marketplace

The Shihtzu Exchange development community team is also start working to the next level- to introduce ourselves to our worldwide community, partners, and investors, once the complete development and testing will complete then we will launch our Shihtzu NFT Minting Marketplace as per the roadmap. The Shihtzu Exchange team is beyond thrilled to see the vast interest and growing attention of meme industry worldwide community and partners for our Shihtzu NFT Minting Marketplace and our vision and our value.

Our Shihtzu NFT Minting Marketplace will be the first platform in the Shihtzu Universe, and our dedicated team to developing practical and innovative technological solutions to enable a seamless web3 NFT marketplace economy. The Shihtzu team is a dedicated team of passionate innovators, researchers, and builders who are committed to bringing product-market-fit solutions to foster the growth of the NFT economy.

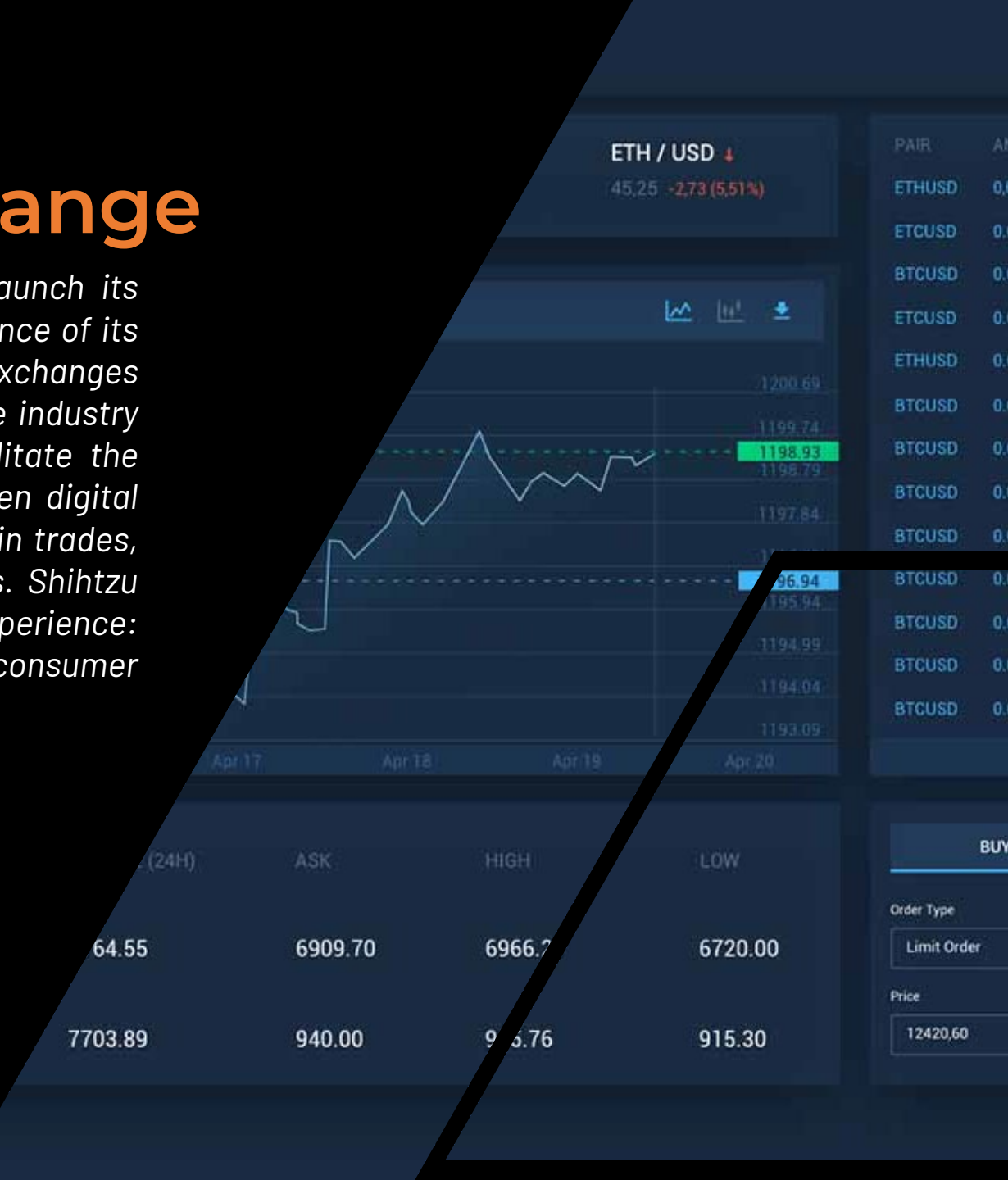


Shihtzu Centralized Exchange

*The Shihtzu Exchange development community team will also launch its advanced centralized crypto exchange to enhance the user experience of its community to the next level, with the **\$STZU** token. As Centralized exchanges will remain a viable onramp to crypto, bringing in new users as the industry continues to grow. Shihtzu Centralized Exchange platforms facilitate the buying and selling of cryptocurrency, like the US dollar, or between digital assets, like BTC and ETH. They function as trusted intermediaries in trades, and often act as custodians by storing and protecting their funds. Shihtzu exchanges also facilitate every aspect of the digital asset trading experience: from security to fair market pricing, to regulatory compliance, consumer protection, and access to various digital assets.*

Shihtzu Centralized Exchanges also offer advanced digital wallets to store cryptocurrency.

If you choose to store your cryptocurrency on an exchange, you are trusting the exchange to hold your private keys and keep your funds secure. This means that you don't need to worry about losing your wallet or private key. Shihtzu Exchanges also offer custody services for financial institutions and investment firms who invest in cryptocurrency.





Shihtzu Metaverse Platform

As per the roadmap of Shihtzu Exchange gaming Metaverse is another platform of the Shihtzu Exchange ecosystem, this platform will launch Shihtzu complete its own blockchain network. According to the CEO of the Shihtzu ecosystem, the Shihtzu team will launch a centralized Platform with gaming metaverse, an NFT and merchandise marketplace, and a Dex & Launchpad platform. The project is derived from Shihtzu meme-based token. The members and enthusiasts of Shihtzu are solely responsible for its creation. The project has three flagship entities or goals, namely:

A Dex and Launchpad

It would entail the creation of an exchange platform and launchpad for the promotion of diverse or new projects.

A Metaverse for NFT Gaming

The Shihtzu World is a Metaverse NFT game that uses the Shihtzu NFT to earn rewards.

Shihtzu Marketplace Merchandise

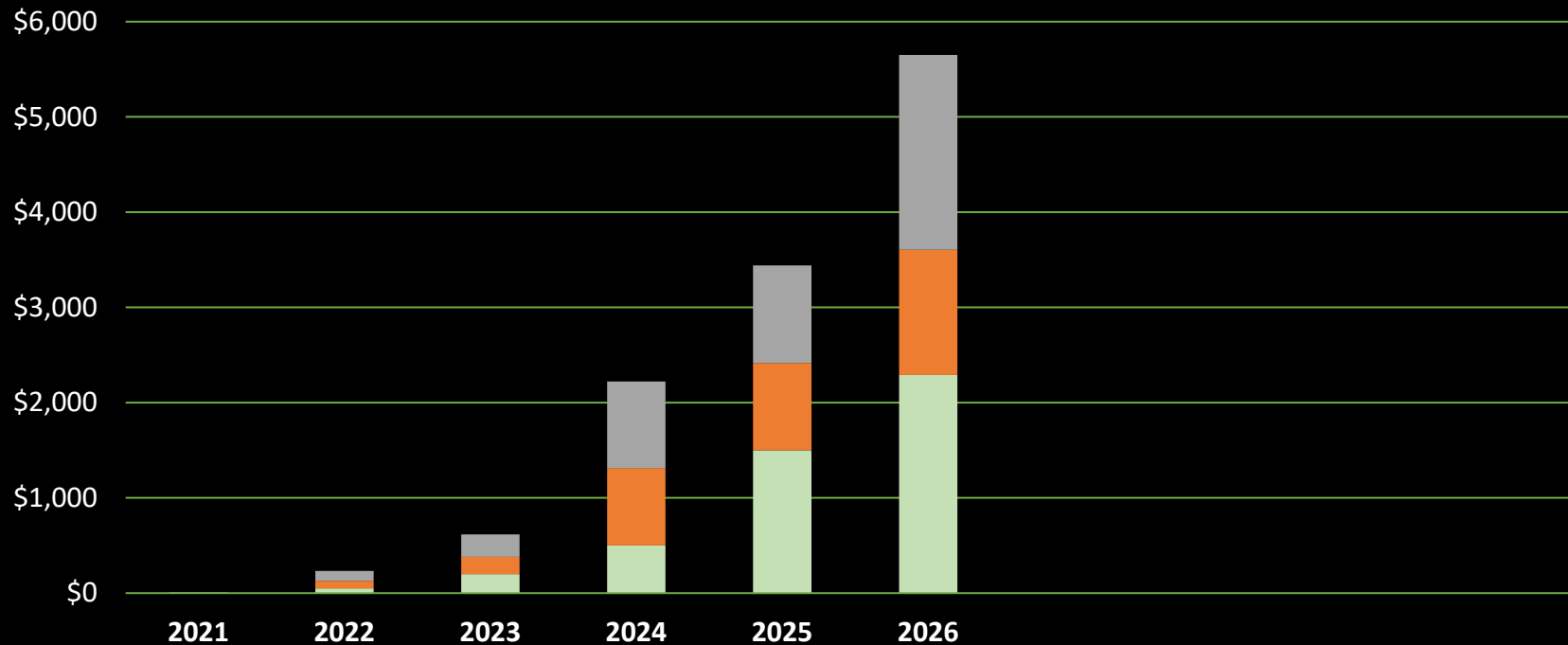
There will be a minting and release of approximately ten thousand randomized NFT to the marketplace. Early community members will benefit from the Shihtzu genesis ecosystem.





Shihtzu Token Growth From Launch to 2023 - 2025

\$STZU is the native token of The Shihtzu Exchange Ecosystem, the online experience that allows users to buy, trade, and make non-fungible tokens (NFTs). What will be the price and growth of STZU token?





<https://t.me/shihtzumemecoin>

THANK YOU

THANKS FOR YOUR ATTENTION
VISIT NOW - WWW.SHIHTZU.EXCHANGE